



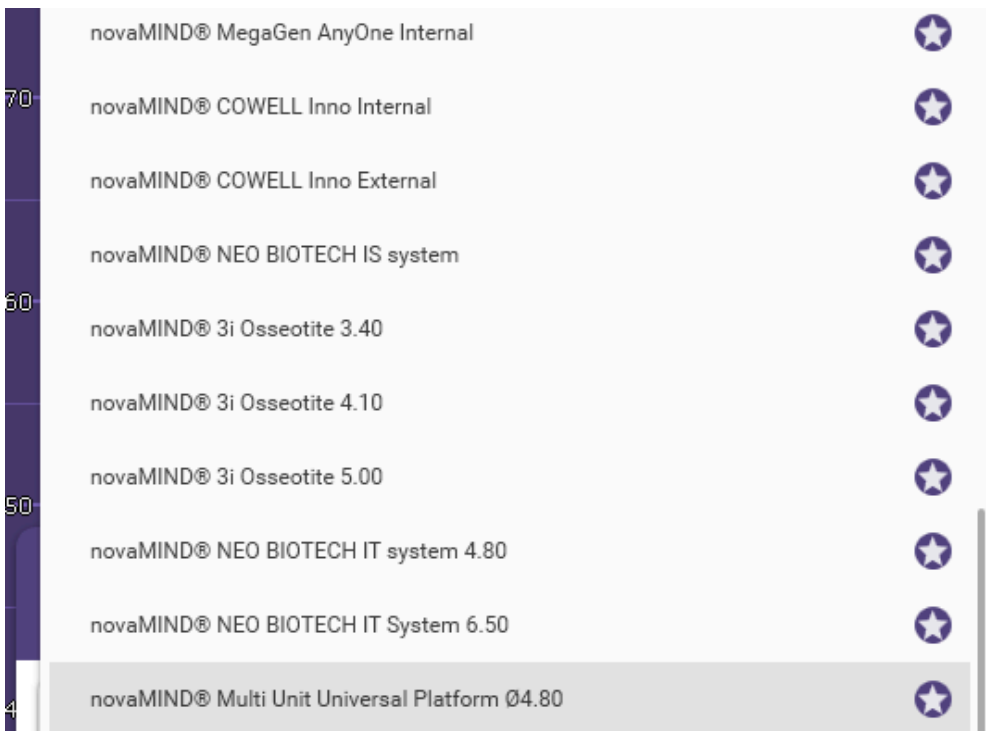
Novamind Multi Unit Mouth System

INSTRUCTIONS

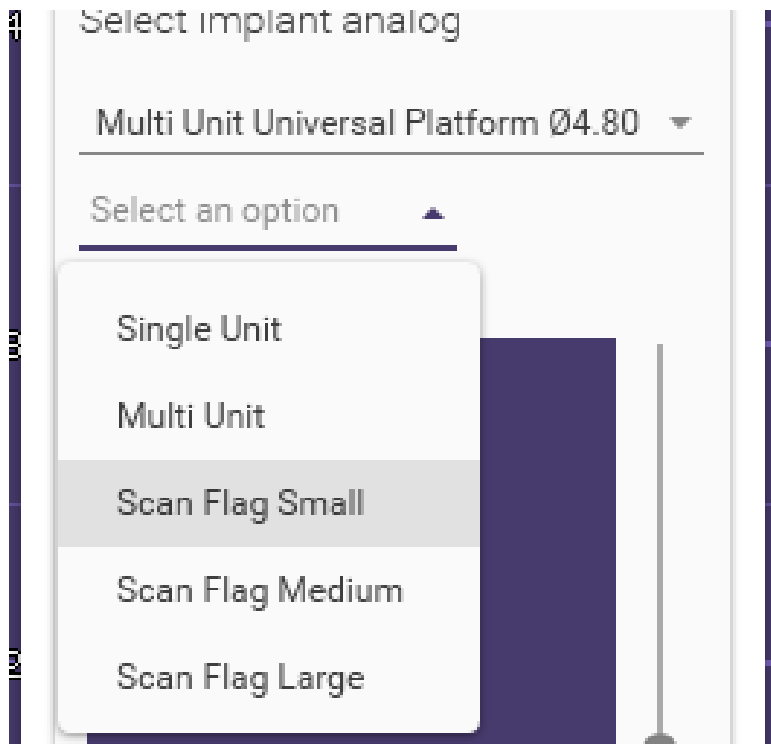
INSTRUCTIONS FOR THE LIBRARIES AND HOW THEY WORK



1) Open the exocad wizard menu, and go to the Detect Implant Position.



2) Find the library named novaMIND®-Multi Unit Universal in the first box

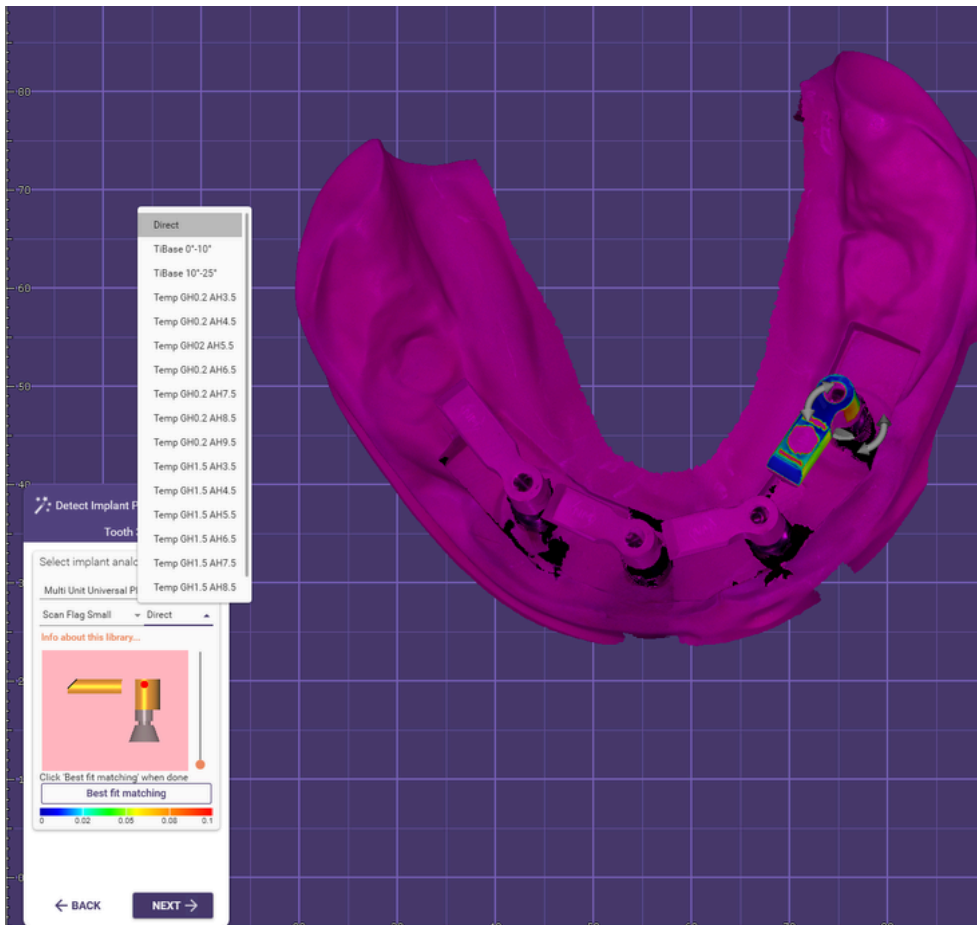


3) Select the correct size of the Scan Flag in the second box. In this example we use Scan Flag **Small**.

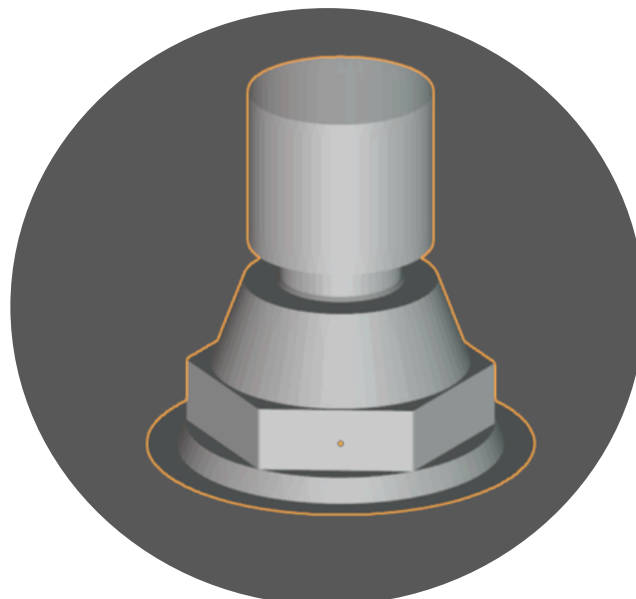
4) Select the prosthetic component that you need in to the third box.

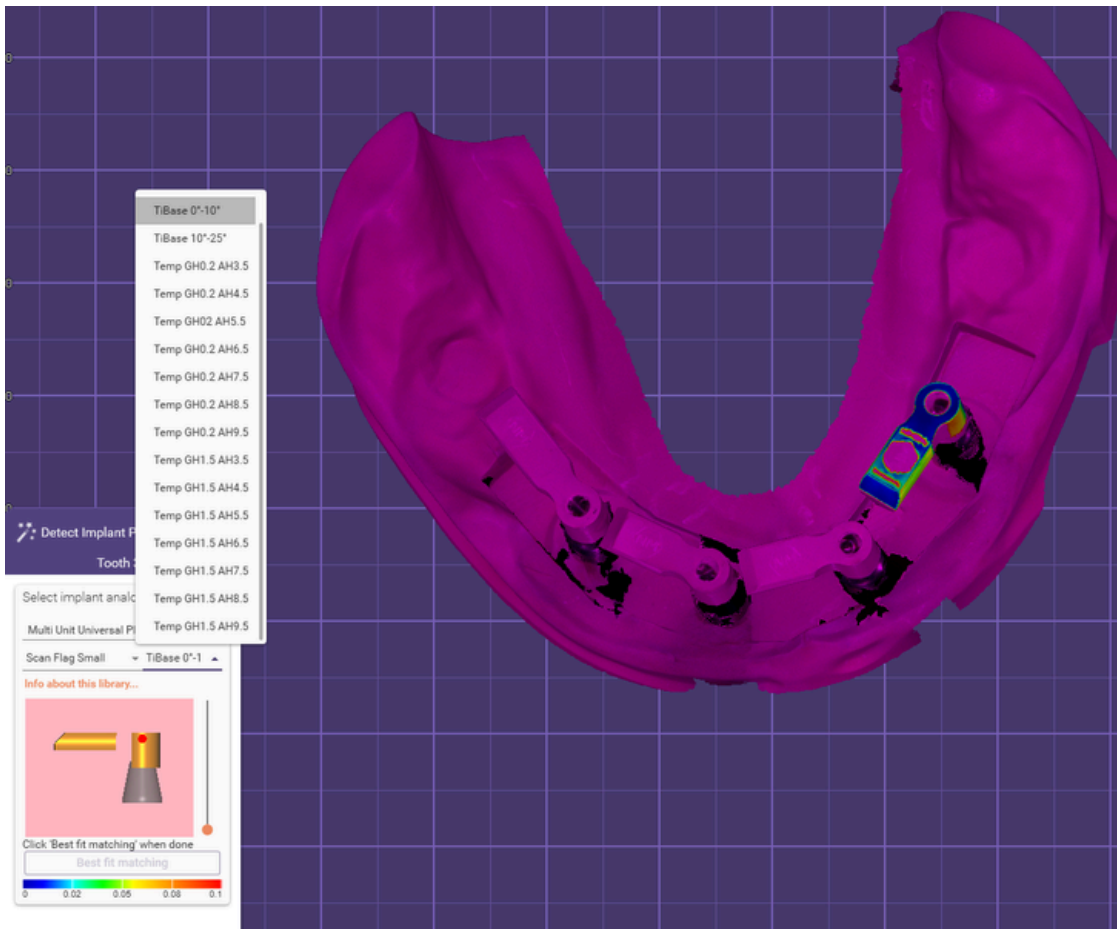
5) You can the choose between :
Direct, Tibase, Temp



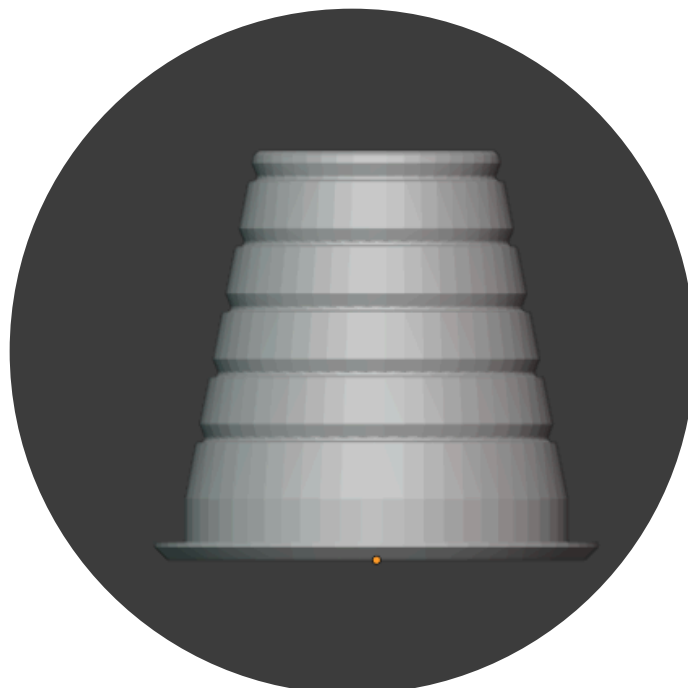


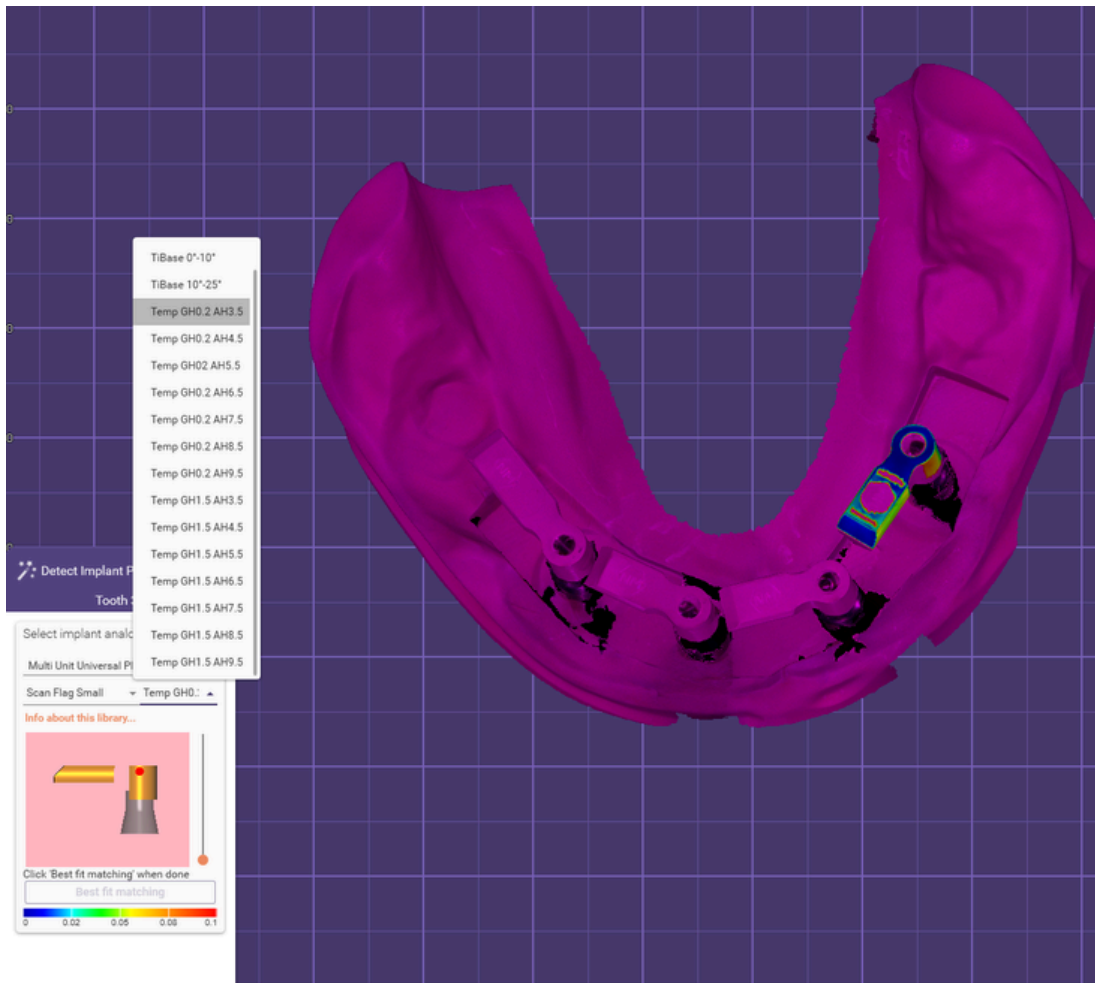
6) In the option Direct you choose the direct connection with the restoration and the implant



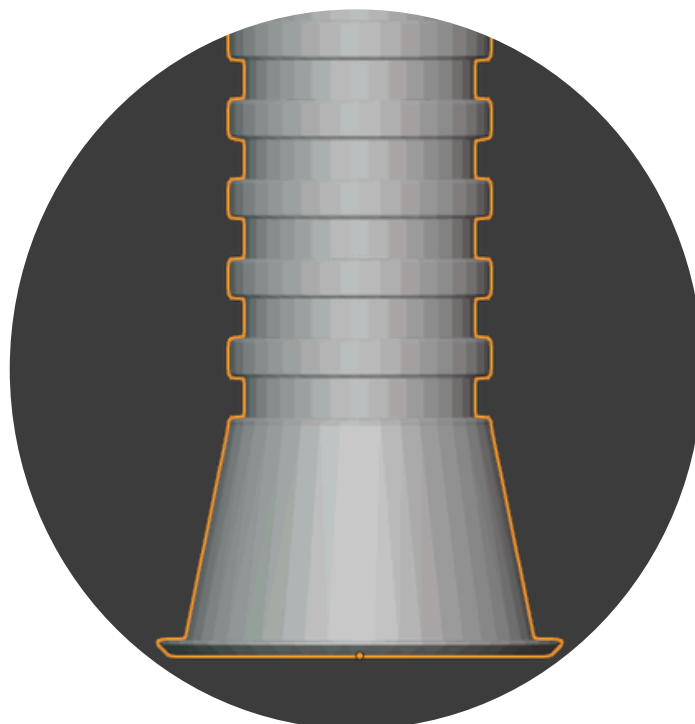


7) In the option Ti base you choose to connect the restoration with a ti base.





8) In the option Temp you choose to connect the restoration with a Temporary base.



9) You can also find the Scan Flags inside the libraries on dedicated brands area . In this example we choose the Scan Flags from the - novamind Dentium Superline & Implantium.

